



ARIZONA DEPARTMENT OF
EDUCATION

Foster Care Education: Effects of Foster Care

Joey Taylor, Foster Care Education Coordinator

Arizona Department of Education

602.542.3569

fostercare@azed.gov



Disclaimer

Disclaimer

This training will cover the topics of foster care, trauma, adverse childhood experiences, neglect, physical abuse, sexual abuse, emotional abuse, etc.

Feel free to take a breath, take a break, stand up, stretch, etc.

Prioritize your safety & well-being during this training.



Objective

Objective

The objective of this training is to better understand:

- Foster care in general
- What students in foster care experience
- How to create a welcoming environment for students in foster care

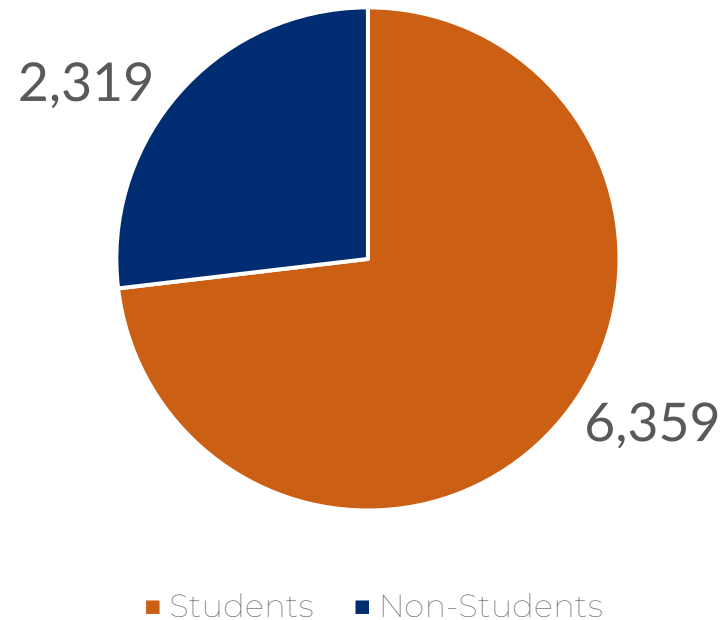
Question



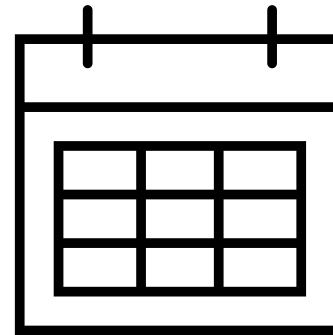
If you were forced to leave your house, right now, what are three items you would grab?

Foster Care Data

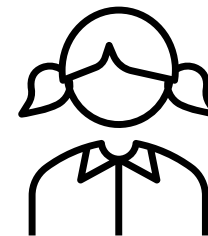
Children in Department of Child Safety
(Total- 8,678)



Foster Care Mobility



20,300 Moves a year
55.58 Moves a day

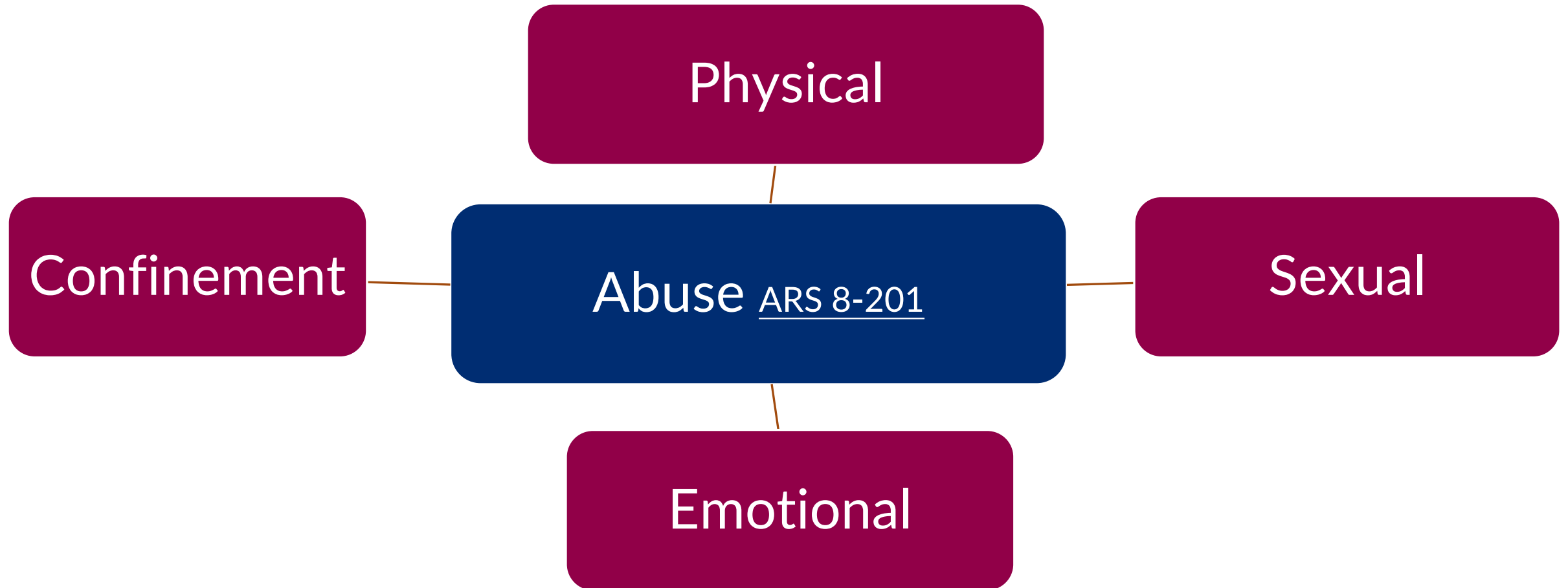


2.20 Moves per child

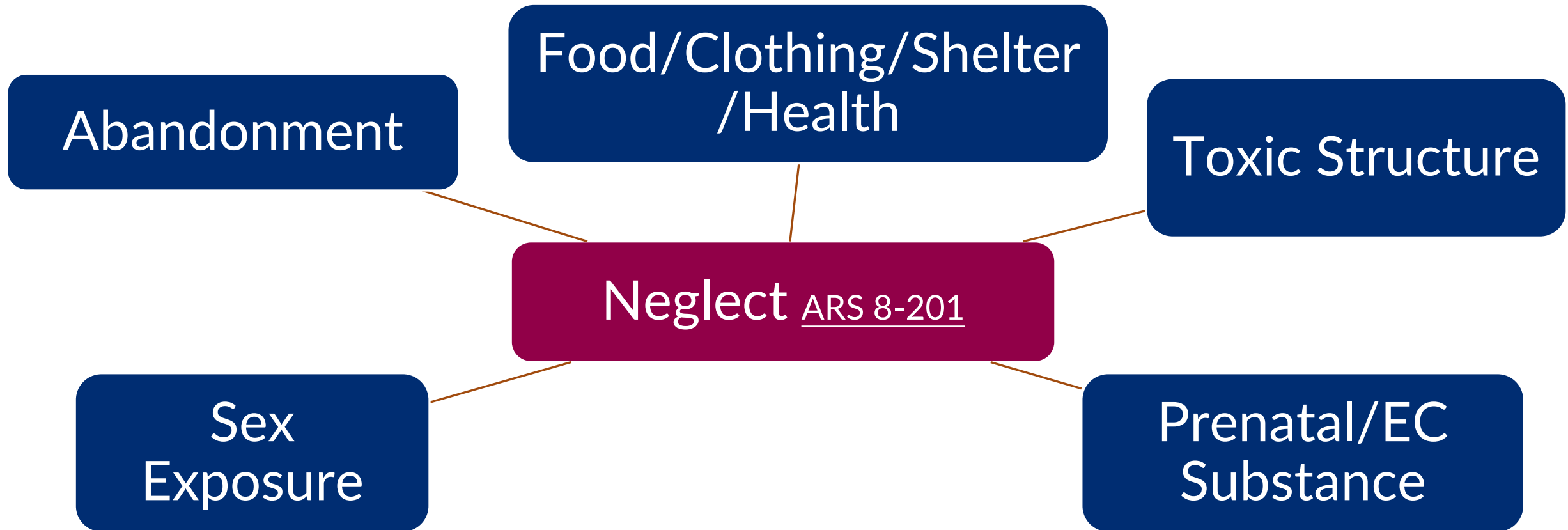


Abuse & Neglect

Abuse



Neglect





Child Maltreatment

Child Maltreatment Data

POLICY ALERT

Children and the Foster Care System

When children experience the most vulnerable moments in life, it is critical that they are supported to be safe and to thrive. With the passage of the bipartisan Families First Prevention Act in 2015, policymakers and child welfare agencies across the country have worked to move supports and resources towards prevention so that children and families can safely stay together. As is true nationally, Arizona has experienced less children entering the foster care system.

Re-define Neglect so Poverty is Addressed With Resources Not Family Separation

The vast majority of children in Arizona's foster care system are in care due to neglect, and much of what is deemed neglect stems from poverty. Research shows that when families are financially insecure and have high parental stress due to issues like unemployment, housing instability, and food insecurity, children experience "neglect" at a rate seven times greater than other children.¹⁹ However, when families have access to concrete supports like Temporary Assistance for Needy Families (TANF), child care, and supportive housing, reports of neglect and entries into foster care decrease.²⁰ The definition of neglect in Arizona statutes should be clear that poverty does not equal neglect.

Arizona Places Too Many Children in Group Homes

Once a child is determined to need out-of-home care in the foster care system, much work remains to be done to reduce reliance on congregate care settings in Arizona. Arizona is an outlier and is the number one state in the nation that places the youngest children – under age 12 – in group homes. Children have poorer outcomes in group placements when compared to a safe family setting.²¹ Children's Action Alliance will continue to advocate for Arizona policymakers to act urgently and require the Arizona Department of Child Safety to drastically reduce placements of all children in group homes, especially children under 12.

Arizona Child Welfare Summary²²

Year	2018	2020	2022
Foster Care Entry Rate	5.6	5.8	4.3
Children in Foster Care on 9/30	13,419	13,717	12,358

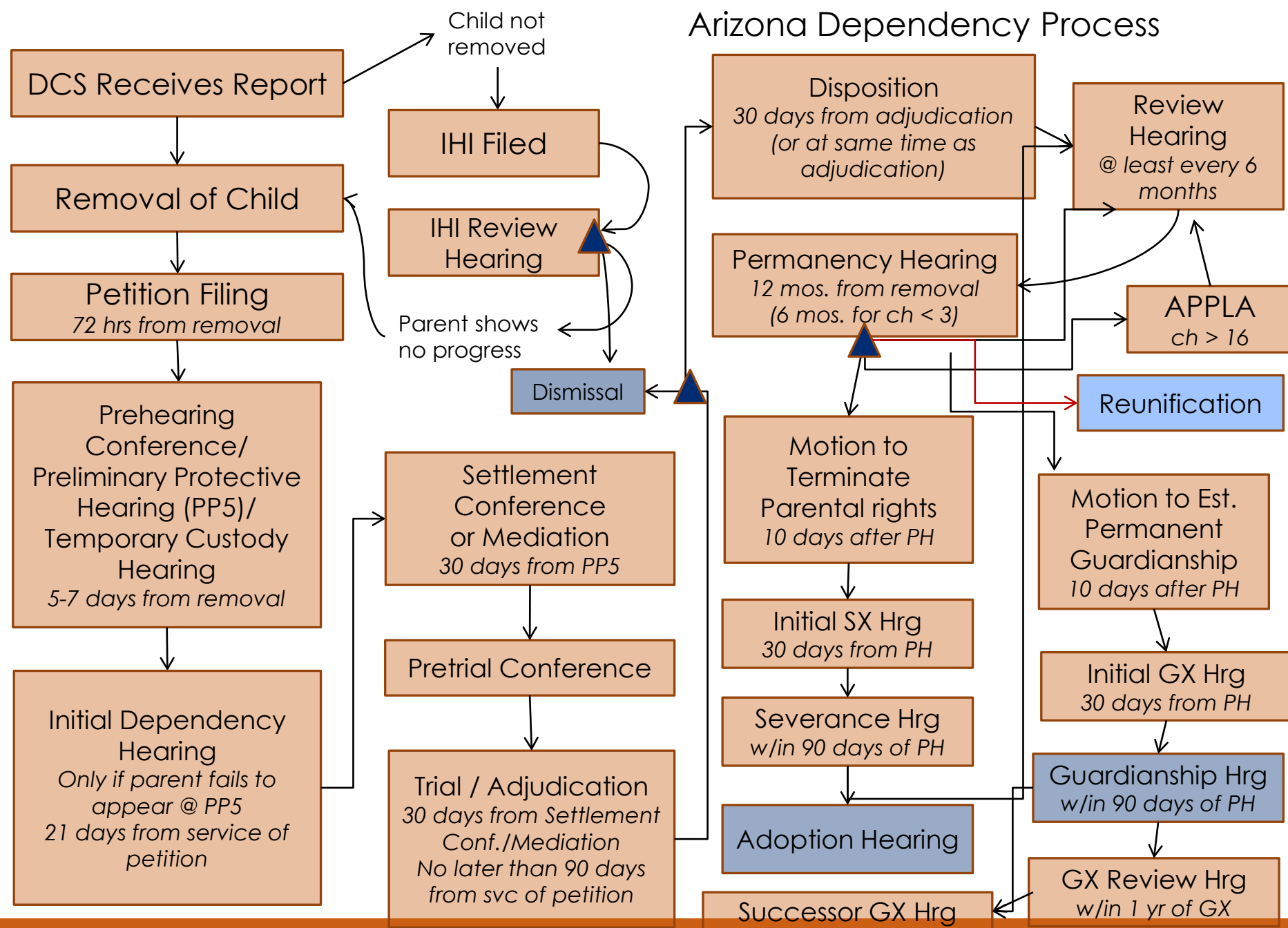
Maltreatment Types²³

Year	2018	2020	2022
Emotional Abuse	<.1%	<.1%	7.1%
Medical Neglect	N/A	N/A	0.1
Neglect	97.2%	97.0%	97.7%
Physical Abuse	8.2%	8.7%	10.8%
Sexual Abuse	4.0%	3.9%	4.8%
Number	15,504	9,954	12,324



Dependency Process

Arizona Dependency Process





Foster Youth Bill of Rights (All ages)

LRE

Safe Place

**Relative
When Best**

Close to Siblings

Know Why

Speech Needs

**Appropriate
Discipline**

**Choice of
Activities**

School

**Personal
Care**

Good Clothes

Belongings

Space

Healthy Foods

Visitation

Talk to Team

Representation

**FC
Participation**

Go to Court

Privacy

Health Care

No Extra Meds

**Separate
Treatment**

Report Violations

**Informed of
Disability
Assistance**

Copy of Rights



Foster Youth Bill of Rights (14 and Older)

Prep to Adult

**Career
Planning**

**Informed of
Post-Sec.
Options**

**Assist w/
Independence**

**Request Court
for Capacity**

Identification/DL

**Leave w/ Important
Documents**

Reentry until 21



ACEs

UNDERSTANDING ACES WITH

DR. NADINE BURKE HARRIS

WATCH NOW



OFFICE OF THE
CALIFORNIA
SURGEON GENERAL

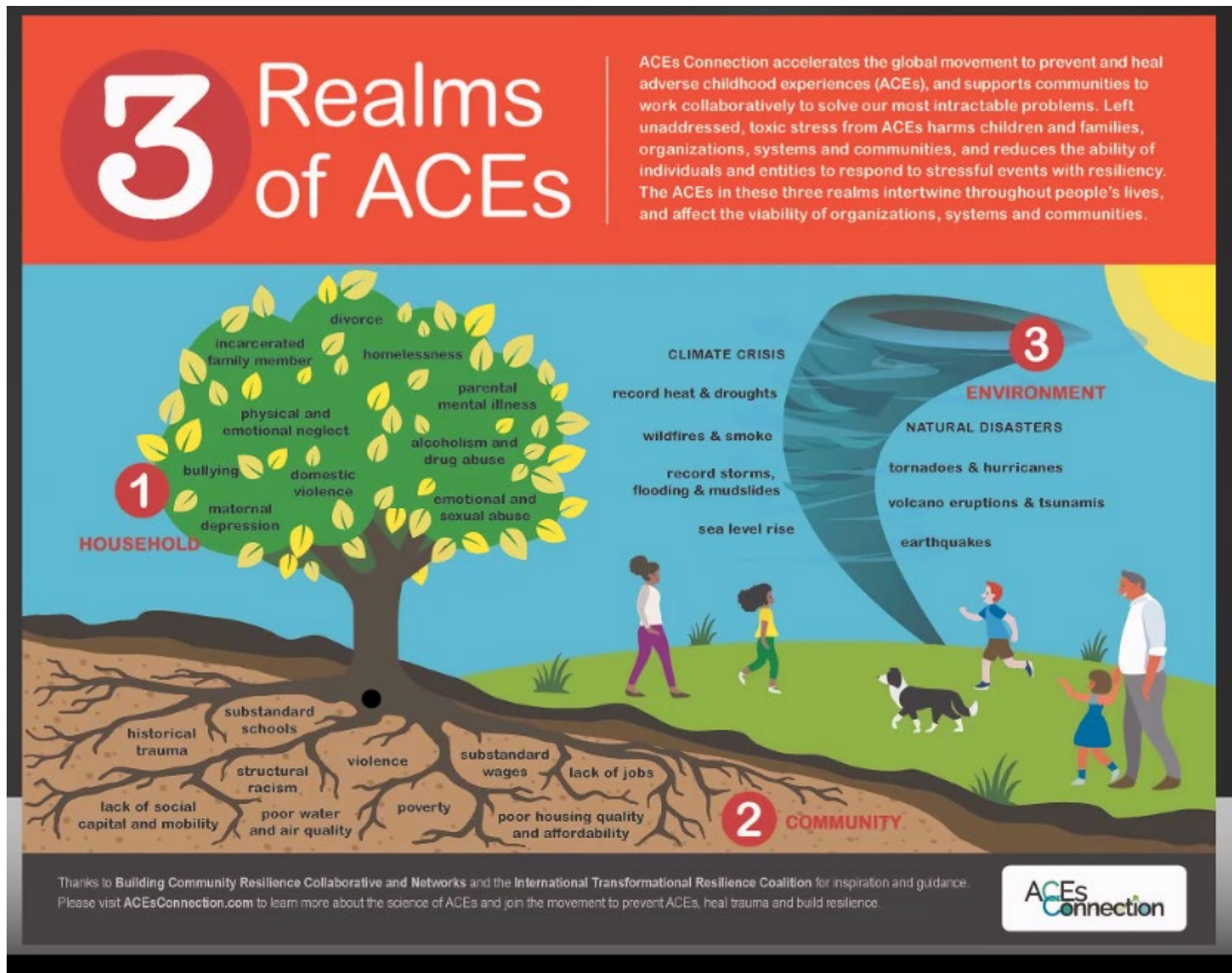


https://youtu.be/Hh1idR1XkC4?si=C9Bv6_cEfbCZSL6G

ACEs

Verbal abuse/threatened	Physical abuse
Sexual abuse	Not feeling loved or close to family
Lacked physical needs or parents too high/drunk to care for you	Separated or divorced
Mother physical abuse	Alcohol/drug abuse
Mental illness	Prison

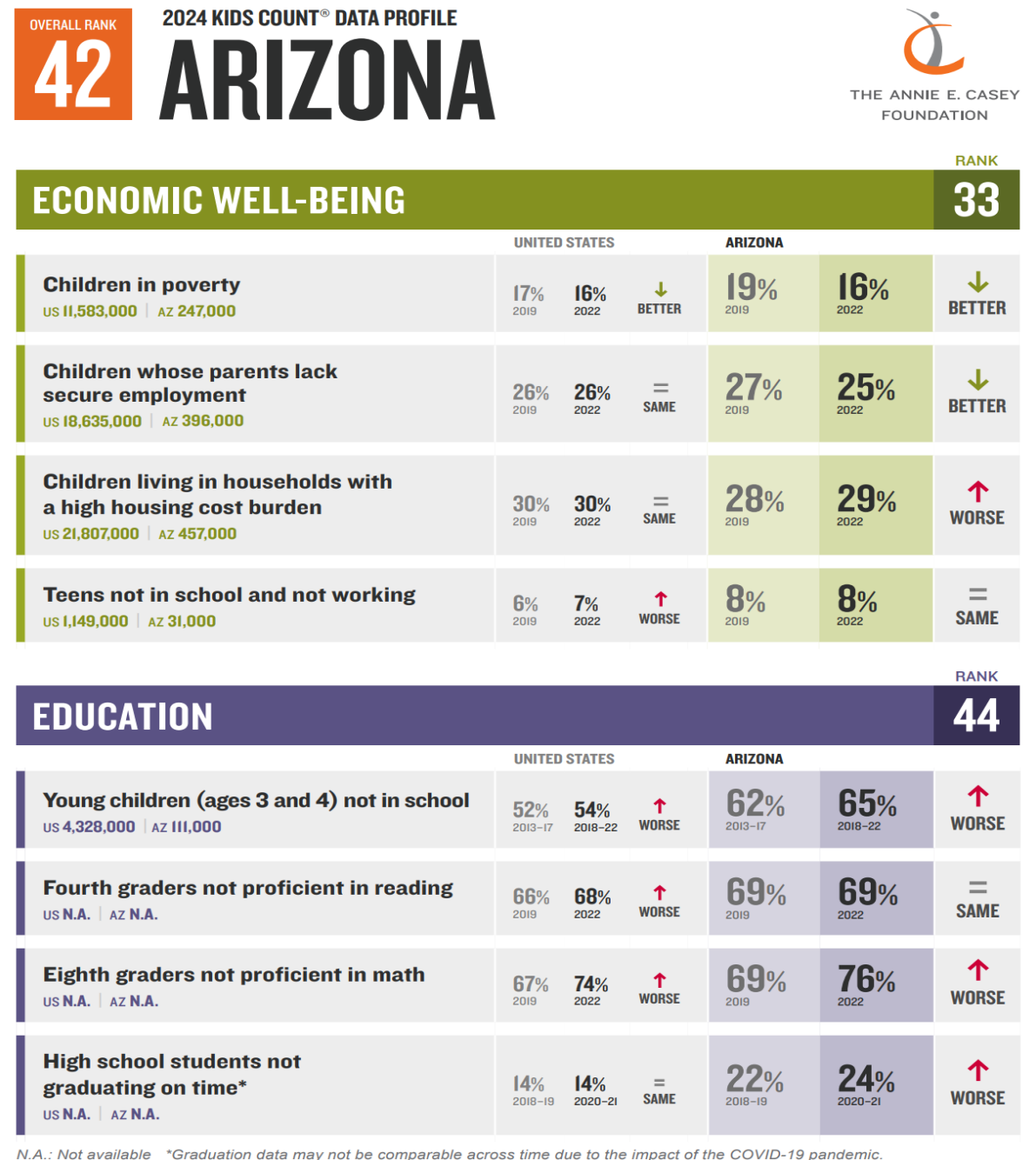
ACEs Context





Arizona Kids Count Profile

Economic Well-Being & Education



Health & Family and Community

HEALTH

RANK

34

	UNITED STATES			ARIZONA		
Low birth-weight babies US 315,288 AZ 6,119	8.3% 2019	8.6% 2022	↑ WORSE	7.4% 2019	7.8% 2022	↑ WORSE
Children without health insurance US 3,932,000 AZ 142,000	6% 2019	5% 2022	↓ BETTER	9% 2019	8% 2022	↓ BETTER
Child and teen deaths per 100,000 US 23,140 AZ 591	25 2019	30 2022	↑ WORSE	30 2019	35 2022	↑ WORSE
Children and teens (ages 10 to 17) who are overweight or obese** US N.A. AZ N.A.	N.A. N.A.	33% 2021-22	N.A.	N.A. N.A.	31% 2021-22	N.A.

FAMILY AND COMMUNITY

RANK

41

	UNITED STATES			ARIZONA		
Children in single-parent families US 23,331,000 AZ 557,000	34% 2019	34% 2022	= SAME	37% 2019	37% 2022	= SAME
Children in families where the household head lacks a high school diploma US 8,015,000 AZ 217,000	12% 2019	11% 2022	↓ BETTER	15% 2019	14% 2022	↓ BETTER
Children living in high-poverty areas US 5,682,000 AZ 133,000	12% 2013-17	8% 2018-22	↓ BETTER	20% 2013-17	8% 2018-22	↓ BETTER
Teen births per 1,000 US 143,789 AZ 3,558	17 2019	14 2022	↓ BETTER	18 2019	15 2022	↓ BETTER

N.A.: Not available **Overweight or obese data are not comparable across time due to methodology changes.

Children's Action Alliance | azchildren.org | 602.266.0707

Find additional data on this state's children and families at datacenter.aecf.org/AZ.

Learn about child well-being and state rankings at www.aecf.org/databook.



Behaviors at School

Question



From your experience, what behaviors (positive & negative) have you witnessed from students in foster care in the school setting?

Potential Common Characteristics

- Hoarding
- Developmentally Delayed
- Inappropriate attachment
- Parentified, especially with siblings
- Self sabotage



Helpful School Environments

Supportive School Characteristics

- Understanding school staff
(especially with school discipline)
- Tardiness/ Unexcused absences
for foster care reasons
- Regulated Adults



<https://youtu.be/AZ-pU7ozt3g?si=MwnBfKr3LJDudqxs>



<https://youtu.be/1Ewgu369Jw?si=r1oto4gatsUb01sg>



Positive Childhood Experiences

PCEs

Talk to family about feelings	Felt support from family during difficult times
Participate in community traditions	Felt sense of belonging in HS
Felt supported by friends	At least 2 non-parent adults took interest in you
Felt safe/protected by an adult at home	



Foster Care School Stability

Foster Care School Stability Steps

Student enters foster care or has a change in foster care placement

Student remains at the school of origin while the LEA & child welfare agency execute the BID process

BID

BID Outcome: Stay in
School of Origin

LEA & child welfare agency
collaborate on transportation

BID Outcome: Do Not
Stay in School of Origin

The new school immediately enrolls the
student, even without all paperwork.



Foster Care Education



Closing & Next Steps

Feedback Survey & Certificates

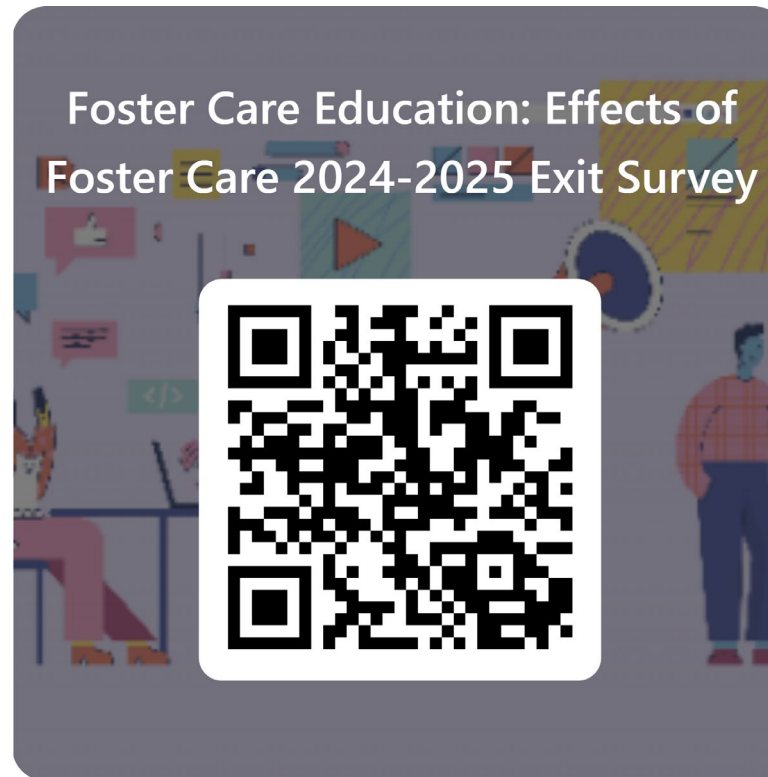
Feedback survey

- Must complete survey to receive PL certificate in APLD Blackboard & receive credit for attending the mandatory training

Recording and slides

- The recording & slides will be posted on ADE's [Foster Care webpage](#)

Survey Link



<https://forms.office.com/r/8Fe5hQbbZG>

Questions



Thank You!



Joey Taylor, Foster Care Education Coordinator

Arizona Department of Education

602.542.3569

fostercare@azed.gov